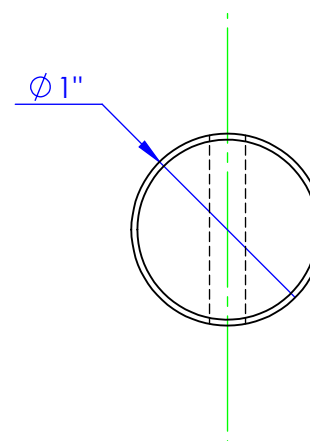
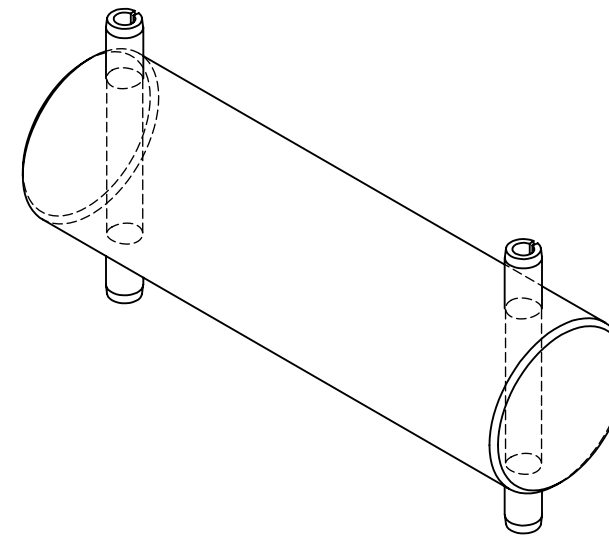
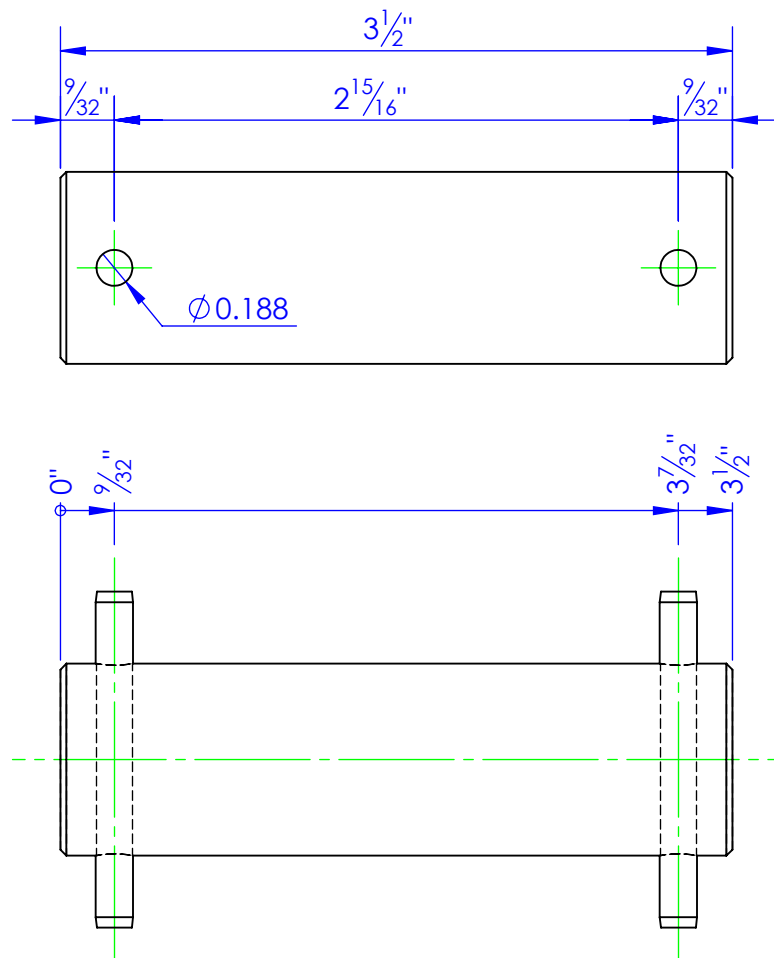


ITEM NO.	PART NUMBER	DESCRIPTION	Material	QTY.
1	HD-PE 3/16x1-3/4	EXPANPIN 3/16x1-3/4		2
2	STC-CR 1x4142 L 3.5	LENGTH: 3-1/2"	CF ANN 4142 1RDx12	1

	REVISIONS		
REV.	DESCRIPTION	DATE	APPROVED
B	UPDATED TO MATCH 3D MODEL	2/4/2013	



**PROPRIETARY AND CONFIDENTIAL**  
THE INFORMATION CONTAINED IN THIS DRAWING IS THE SOLE PROPERTY OF TRIPLE C INC. ANY REPRODUCTION IN PART OR AS A WHOLE WITHOUT THE WRITTEN PERMISSION OF TRIPLE C INC. IS PROHIBITED.

DIMENSIONS ARE IN INCHES TOLERANCES: FRACTIONAL $\pm 1/16$ ANGULAR: MACH $\pm 1$ BEND $\pm$ TWO PLACE DECIMAL $\pm 010$ THREE PLACE DECIMAL $\pm 005$	
MATERIAL	--
DO NOT SCALE DRAWING	

NAME	DATE
DRAWN <b>HEATH</b>	2/5/2013
PART #	RE-PN-1x350
ASM #	
COMMENTS: <b>BASE PIN, MAIN LIFT CYLINDER, HB</b>	

P.O. BOX 248, SABETHA, KS 66534	
<b>TRIPLE C</b> INC.	
SIZE <b>A</b>	DWG. NO. <b>10-1704 B</b>
SCALE: 1:1	WEIGHT: 0.78
SHEET 1 OF 1	REV. <b>B</b>